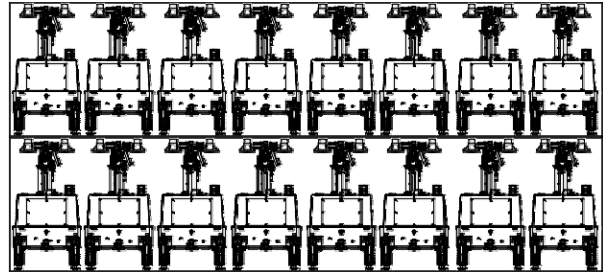


MLT4KSC-4000LD

Powered by Kubota






16U / 40 'HC. CONTAINER



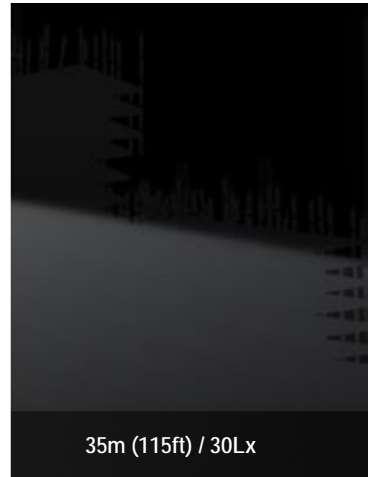
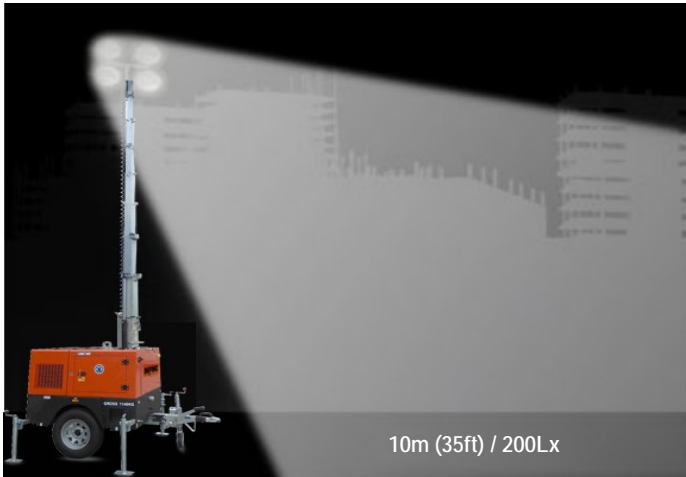
Efficient hydraulic lifting system with rapid telescopic deployment

Mast rotation
360°

✓ Highlights

-  Less fuel consumption. Longer run-time
-  Simple control system
-  High efficiency
-  Sturdy and durable
-  Max height 7.5m





Lighting Tower Technical Data

Power Package Rated Power	6.0KW
Number & Power of Lamp	4×1000W
Rated Frequency/ Speed	50Hz /3000 rpm
Rated Voltage	AC 230V
Noise	65dB(A) @7M
Mast-Maximum Height	7.5M
Mast Lifting & Extension	Manual Operation
Fuel level gauge	Electronic
Tower leg type	Manual
Trailer Load bearing	1000KG
Trailer type	Off road type / On road type
AUX. Power output	16A/3P Socket
Rotation angle range of light	355°
Wind resistance grade	65m/h
Recommended use environment	Level ground

Lamp

Number×Power	4×1000W
Lamp type	Metal halide lamp
Protection Class	IP67
Luminous Efficiency	110Lm/W
Color Temperature	5000 K
Voltage	AC 230V
Lamp service life	50000hrs

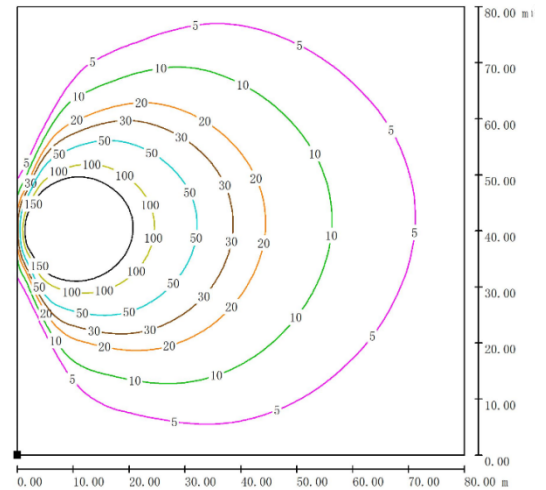
Control System

Controller Model	MALC404
------------------	---------

Dimension and Weight

Max Overall Dimension (L×W×H)	2990×2310×7500 mm
Container loading Dimension (L×W×H)	1480×1100×2450 mm
Tank Capacity / Running Hr.	100 L / 50 hrs.
Weight	700kg
The loading capacity(40'HC)	16 Sets

Note: Specifications and illustrations are subject to revision without notice.



Environmental Conditions

- Ambient temperature: +5°C~+40°C
 - Altitude: ≤1000m
- Note:** Please contact us if operating environmental conditions required do not go with the guidance.

Factory Inspection

- Complete design and quality inspection
- 30 mins full load test
- Function testing
- Protection testing

Painting Process

- MPMC has the most advanced automatic spraying / powder coating production line, and is equipped with various sandblasting equipment to ensure higher quality.
- Canopy painting: HenKel pretreatment process and world famous brand AkzoNobel powder.
- Base Frame painting: Sandblasting process and AkzoNobel powder (Hempel paint is optional).



Engine Specifications

Engine Model	Z482-E3B-CHN-1
Manufacturer	Kubota
Emission	EPA Tier IV
Number of Cylinders	2
Cycle	4 Stroke
Aspiration	Naturally
Prime Power / Speed (Gross)	8.3KW / 3000RPM
Lube-oil Capability	2.5L
Fuel consumption	203g/kWh
Starter motor/ Alternator	0.8KW/12V

- Heavy duty diesel engine
- Anti-vibration mount
- Replaceable fuel filter, oil filter & air filter
- Cooling radiator and fan
- Starter battery (with lead acid) including rack and cables
- Flexible fuel connection hoses
- Exhaust silencer and bellows
- Operation manuals and circuit diagram documents

Alternator Specifications

Alternator Model	EK2MCT
Manufacturer	Sincro
Rated Output Power	6.0KW
Alternator Type	Brushless
Rated Voltage	AC 230V
Rated Speed	3000 RPM
IP Protection	IP23
Insulation Grade	H

OPTIONS

<input type="checkbox"/> Jacket water heater	<input type="checkbox"/> Manual pump
<input type="checkbox"/> Lub-oil heater	<input type="checkbox"/> Smartgen controller
<input type="checkbox"/> ABB/Schneider MCB	<input type="checkbox"/> Sockets
<input type="checkbox"/> Battery charger	<input type="checkbox"/> Larger fuel tank



MPMC POWERTECH CORP.
 sales@mpmc-china.com | www.mpmc-china.com

Photographs are for illustrative purposes only and may not reflect final configuration.

Follow us

- <https://www.facebook.com/mpmcgroup>
- <https://www.linkedin.com/company/mpmcpowertech/>
- <https://www.youtube.com/user/MPMCGenerator>

All information in this document is substantially correct at time of printing and may be altered subsequently. Final weight and dimensions will depend on completed specification.